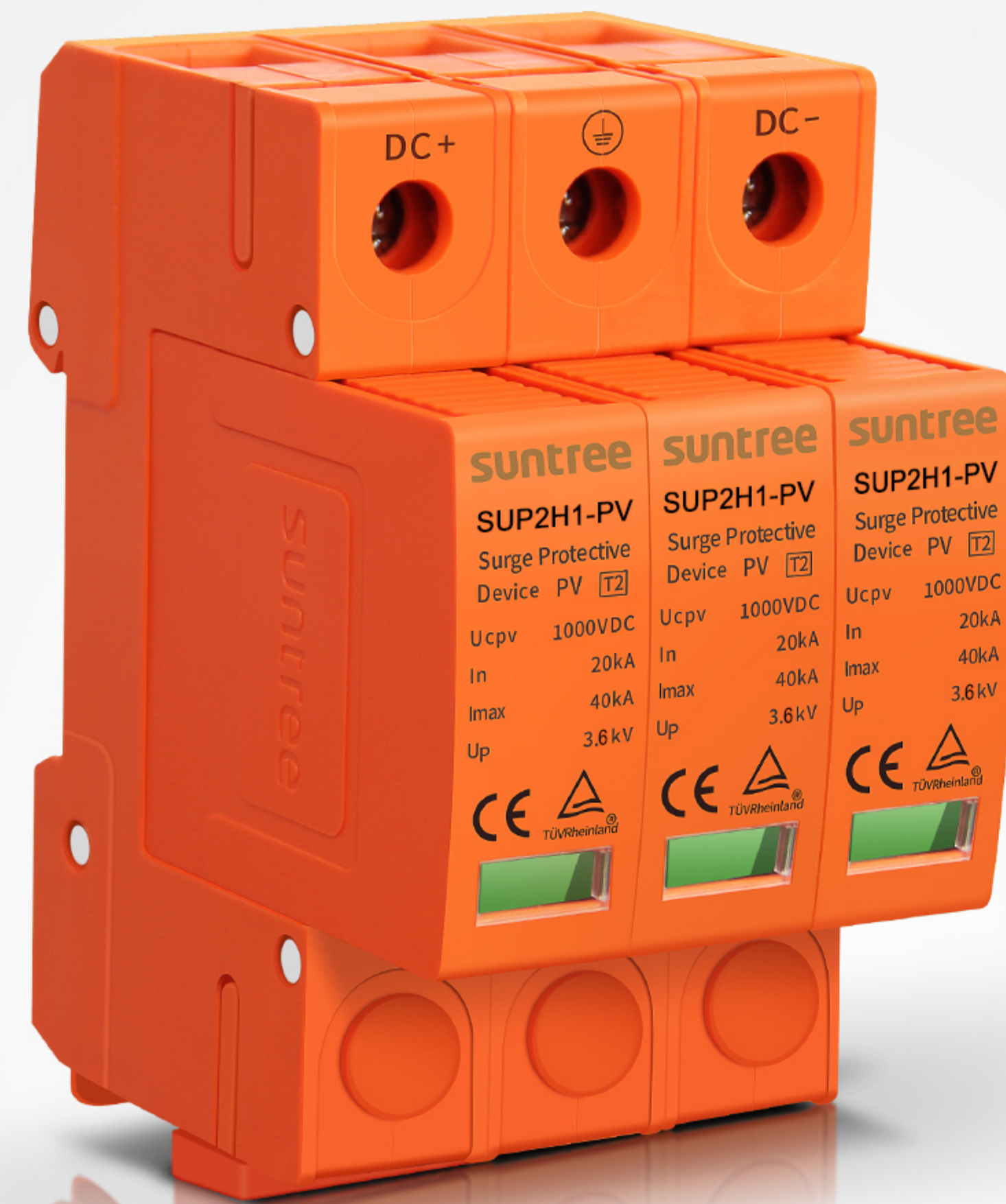




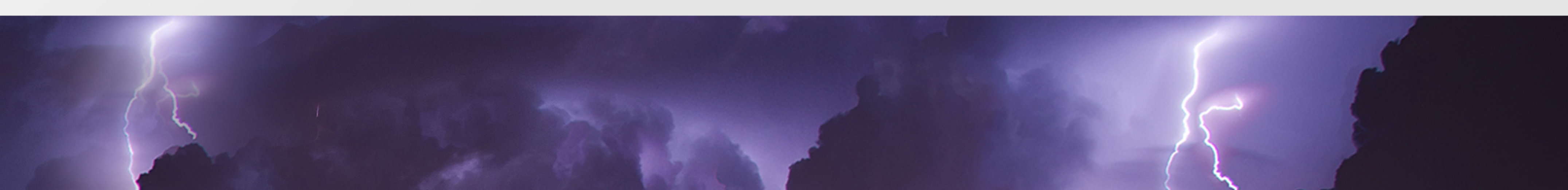
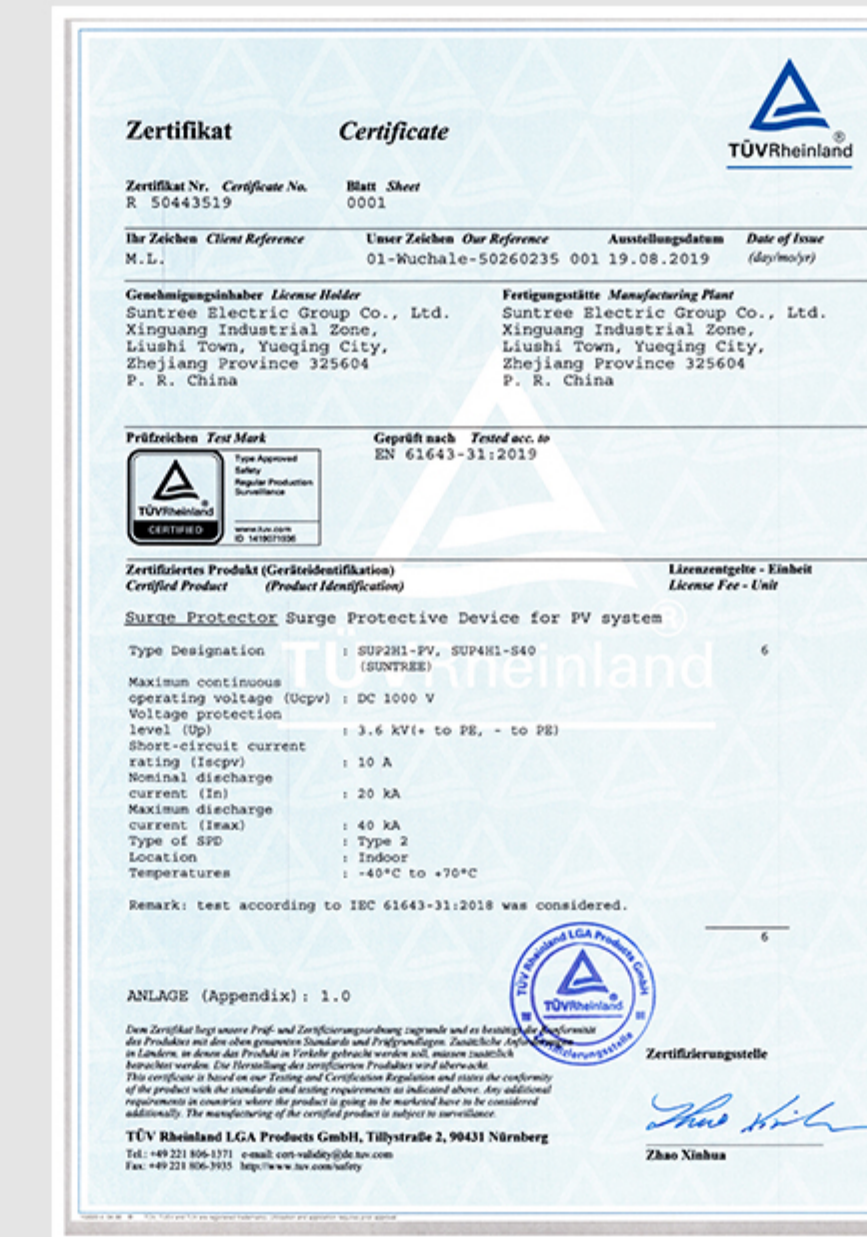
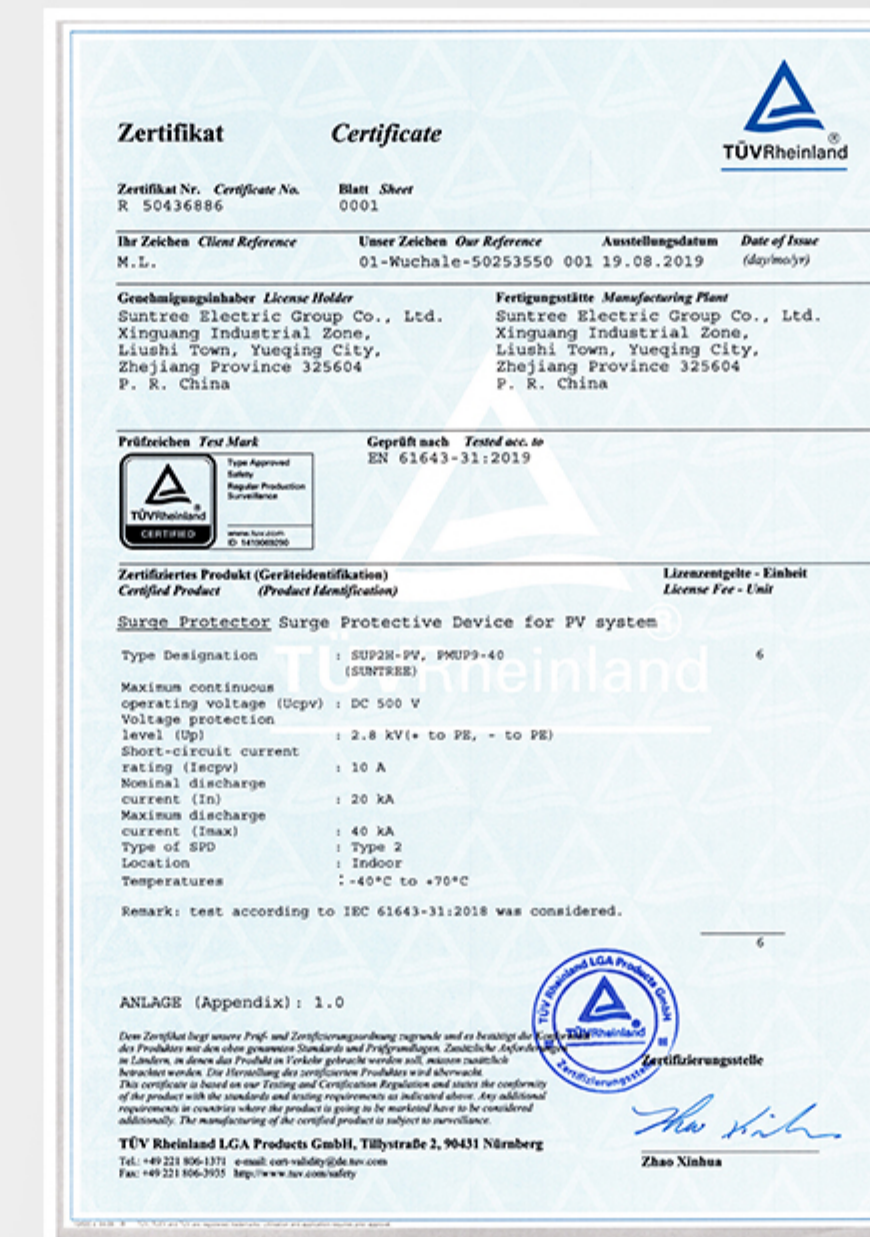
DC SURGE PROTECTOR

suntree
human technology never

CE TÜV Rheinland

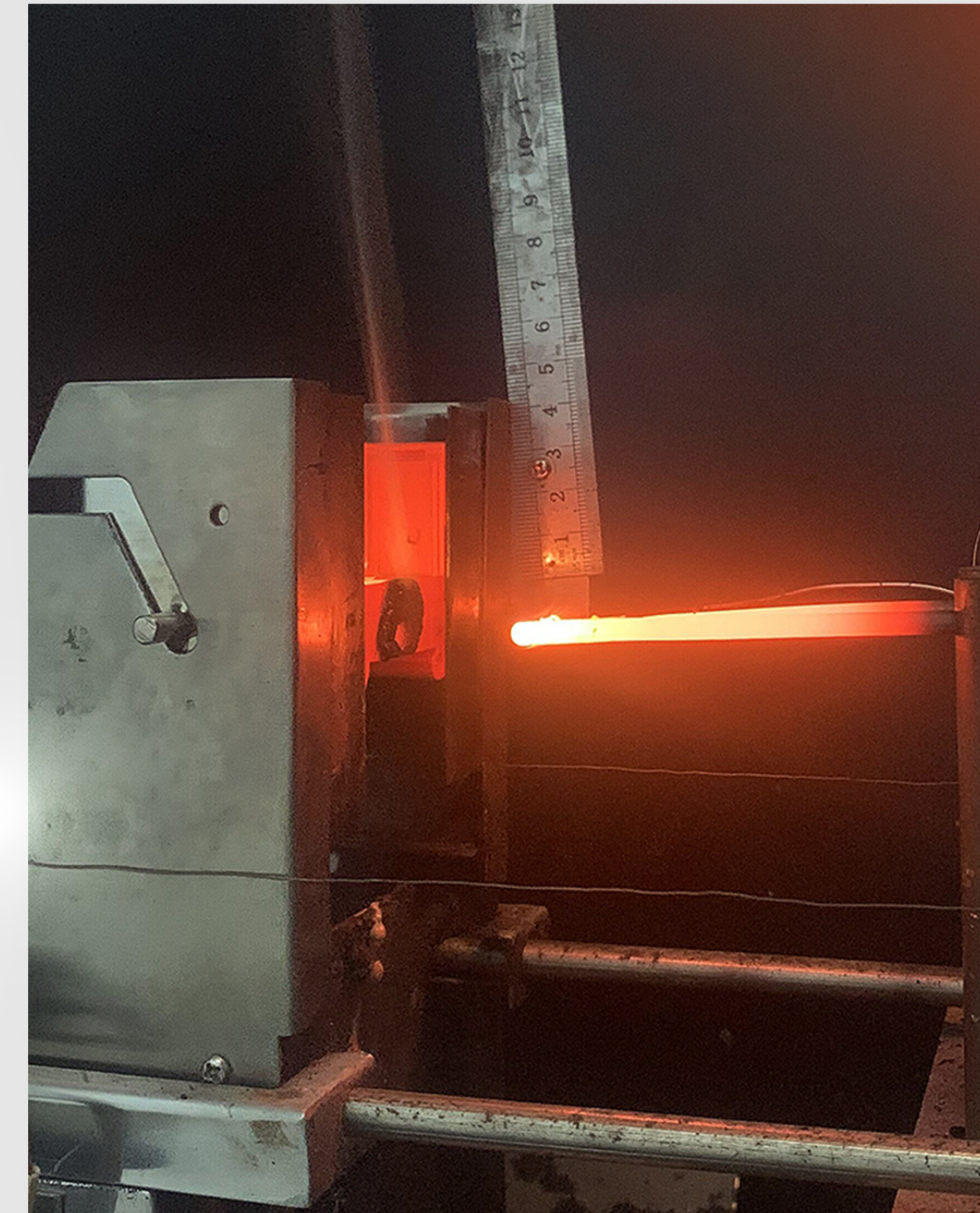
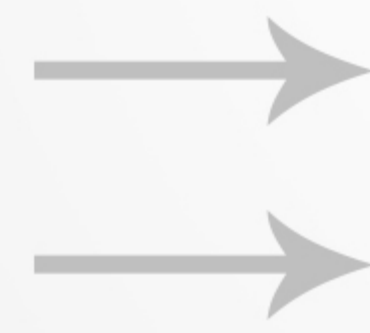


First factory produce **1500V SPD**,
Approved **TUV Certificate** at **EN50539-11** standard.



Glow-wire ignition temperature

PBT flame retardant material,
passed the flame retardancy test at **960°C**
safety always the most important



VARISTOR

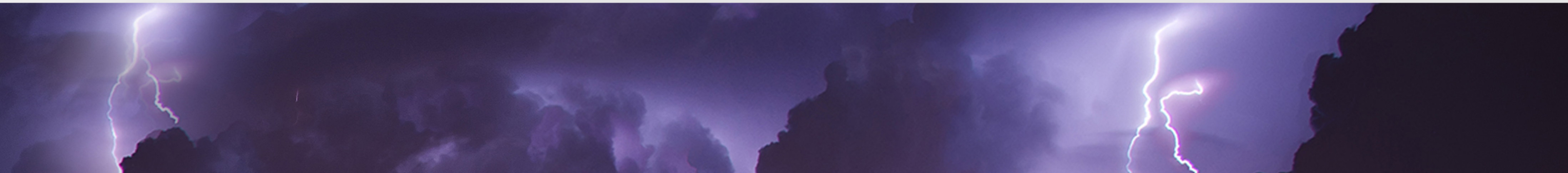


THE MAIN COMPONENTS IS VARISTOR, THIS IS THE CENTRAL ACCESSORY OF THE ENTIRE PRODUCT. VARISTOR DETERMINES THE LEVEL OF SURGE DISCHARGE CURRENT, CLASS B/C/D.THE MATERIAL IS ZINC OXIDE.

Our Varistor can burden 18-1800V, and High current handling and energy absorption capacity, the discharge current is can reach 70KA or higher even 120KA, Fast response time, Low leakage current, and that small size , that is used for protect the electrical appliances in thunderstorm weather.

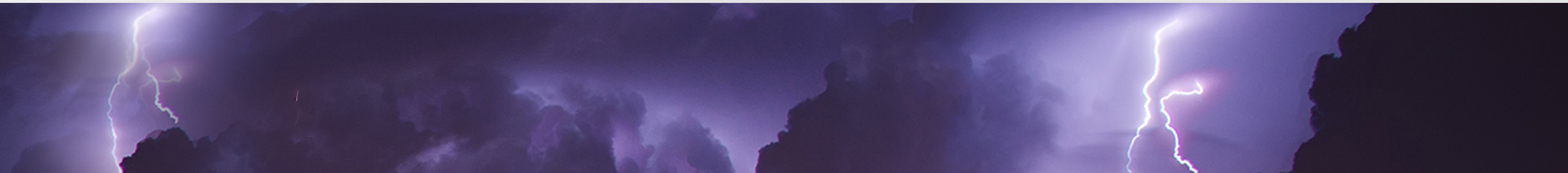
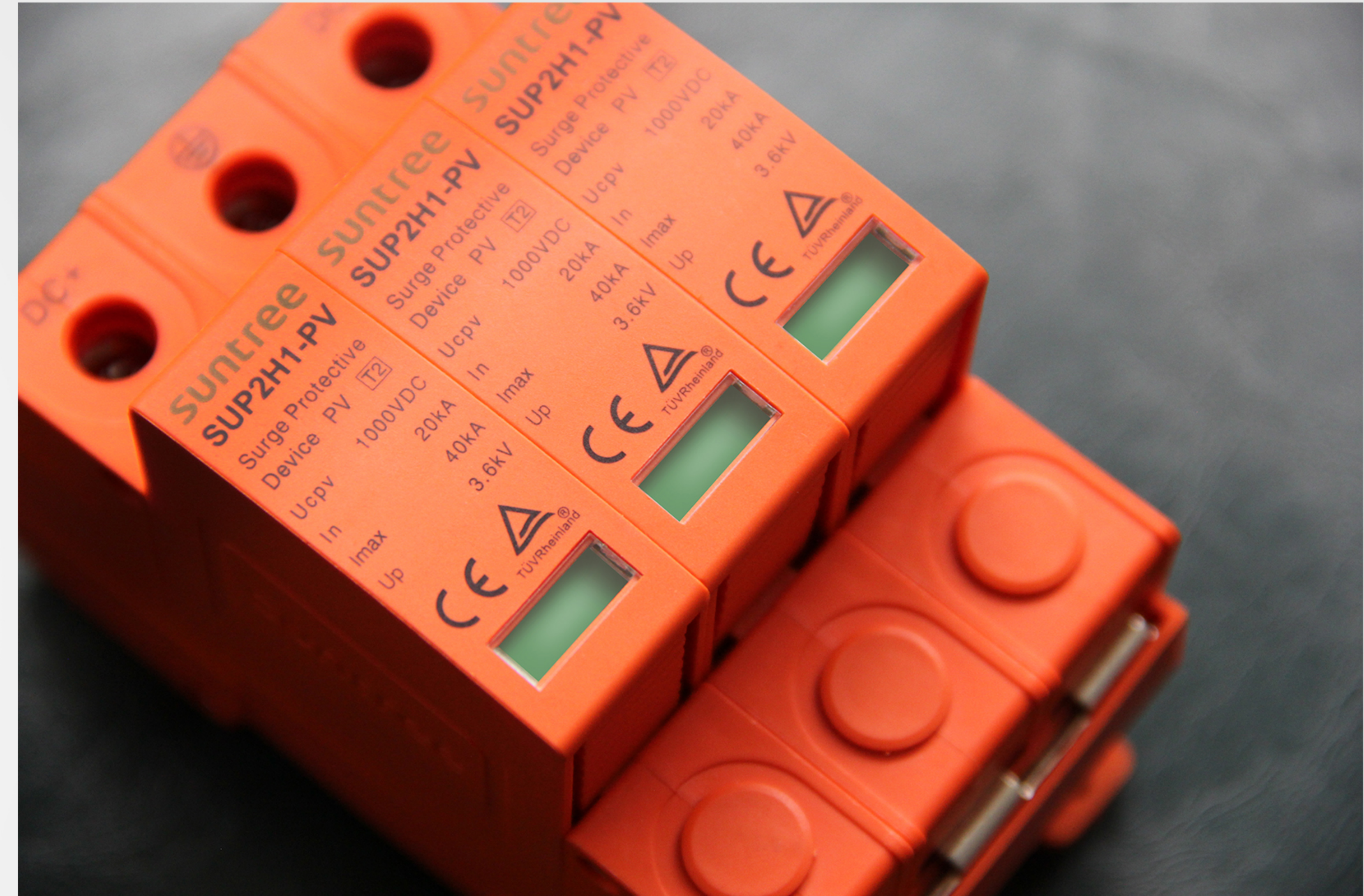
The working principle of this type of varistor is to connect it in parallel with the electrical appliance in the circuit. When the electrical appliance is working normally, its own resistance is very large, so it basically does not work.

When a large current flows in the circuit, the lightning protection varistor is turned on instantaneously, and all the current in the circuit flows through the lightning protection varistor, thereby protecting the electrical appliance.



Indicator window

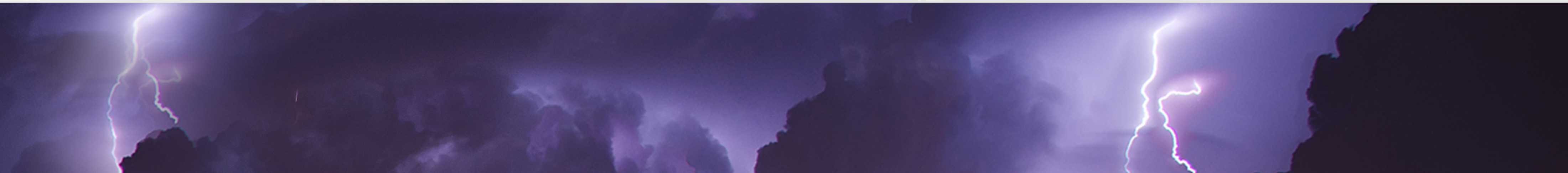
While see the safety of seeing status indicator, in the case of a disconnection, the indicator turns red the SPD needs to be replaced
When encountering high temperature, Solder spots will melt, Causes the lever trip. the window indicator will be changed red, showed the module is failure, so you need to change it.



THE PRODUCT CAN BE CONFIGURED

Remote signal terminal

terminal block, shell PC, antenna copper, wire 0.75mm/copper Connected to the intelligent component of the combiner box, and then connected to the computer, it can display whether the SPD normal work. It can also be connected to a small lamp or a small speaker to show good or bad---



Impact test / Shock test

Times 20KA impacts the entire product test without tripping,
Up does not exceed 3.2KV (one minute apart each time)



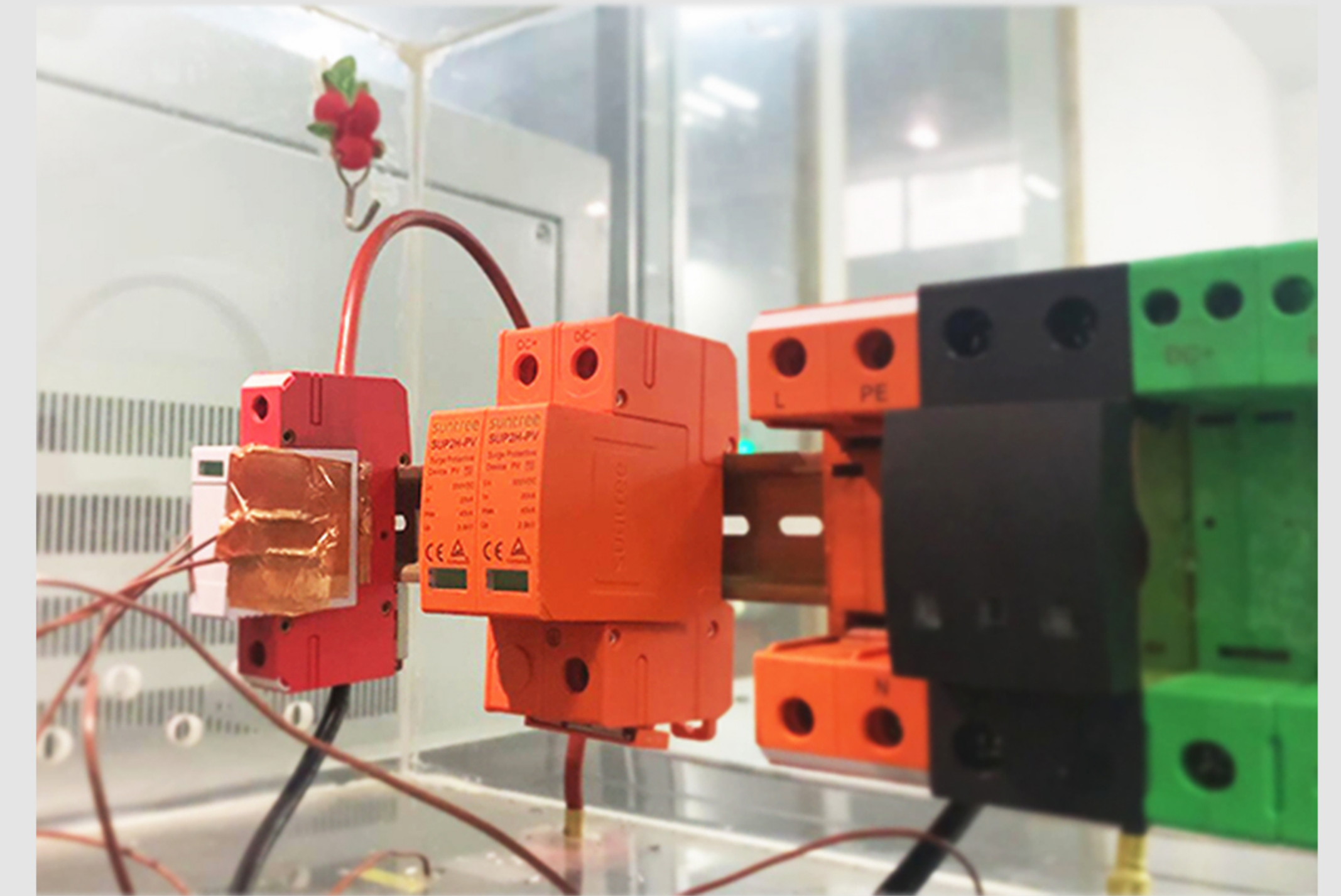
Trip test

After 30 minutes, 5 times 20KA again, no trip
After 30 minutes, 40KA, no tripping



Thermal stability test

Externally applied current 40Ma (20, 80, 160, etc.),
when the shell temperature reaches 120°, it must be tripped.
After 5 minutes, the temperature of the product after cooling
does not exceed 80°. This test can prevent breakdown
(after the chip is pulled apart, there is a small hole)



Static test

Voltage, current, leakage current

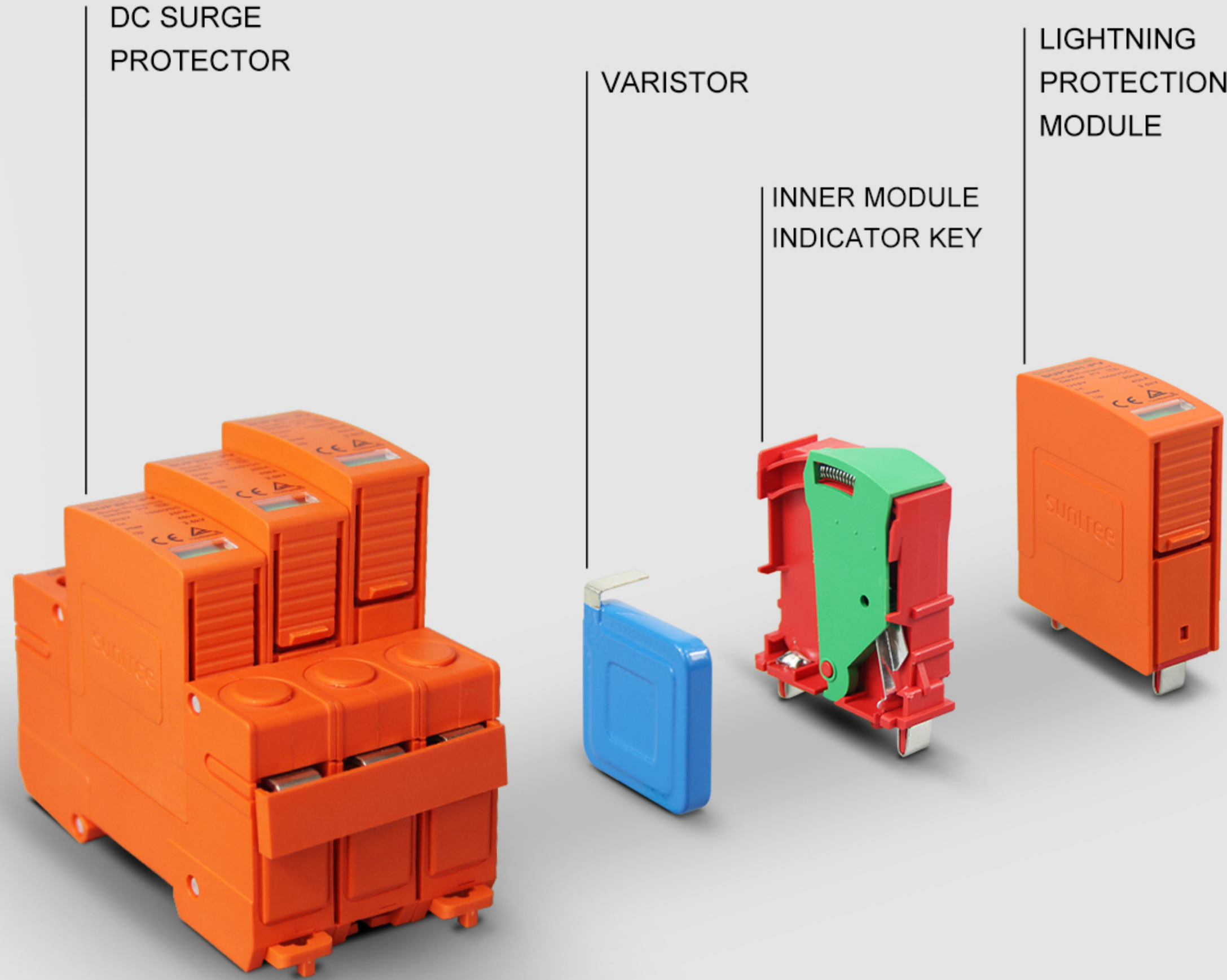


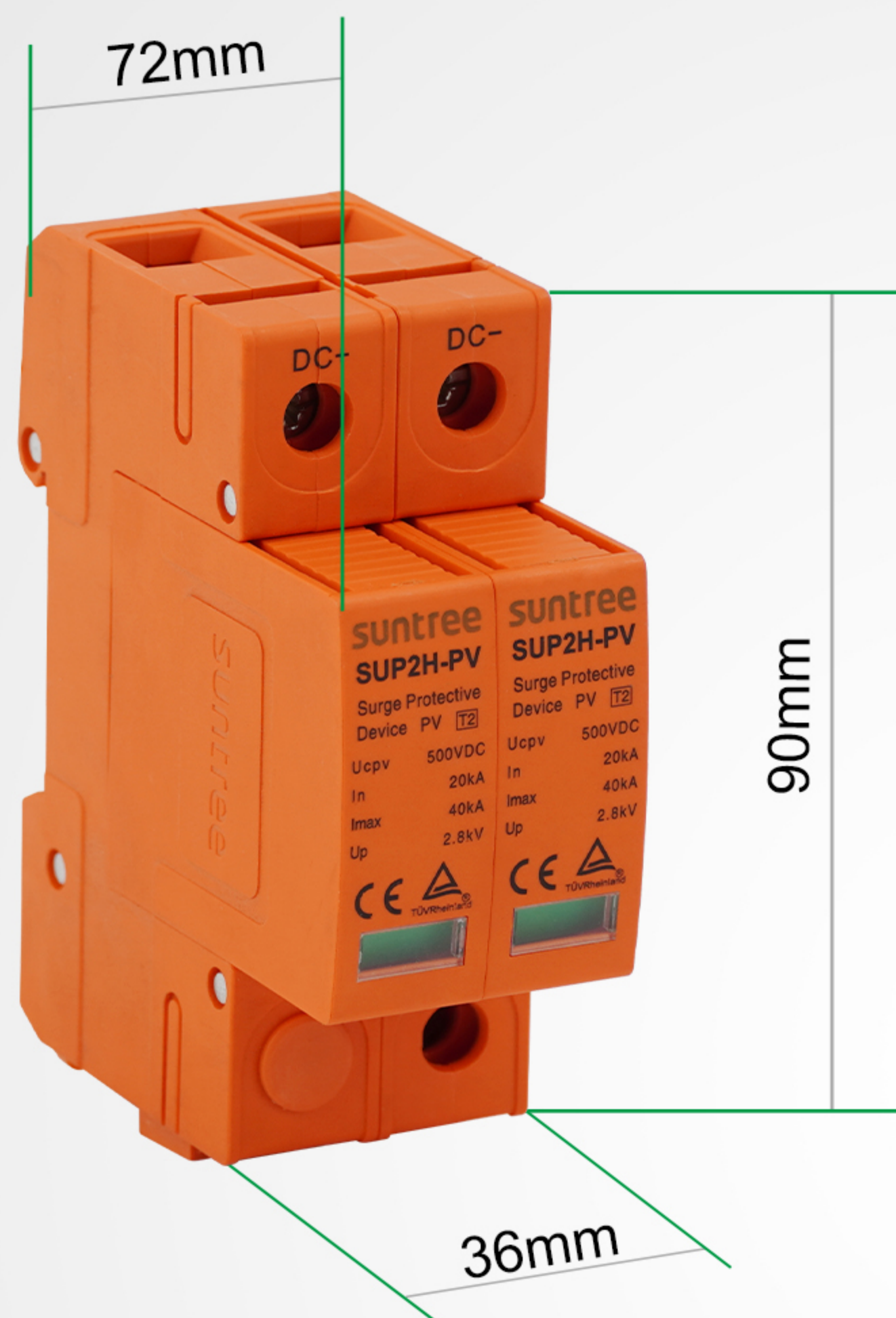
SPD is used to protect all kinds of electrical equipment in the power system from lightning over-voltage, operation over-voltage, power frequency transient over-voltage impact damage to an electrical appliance



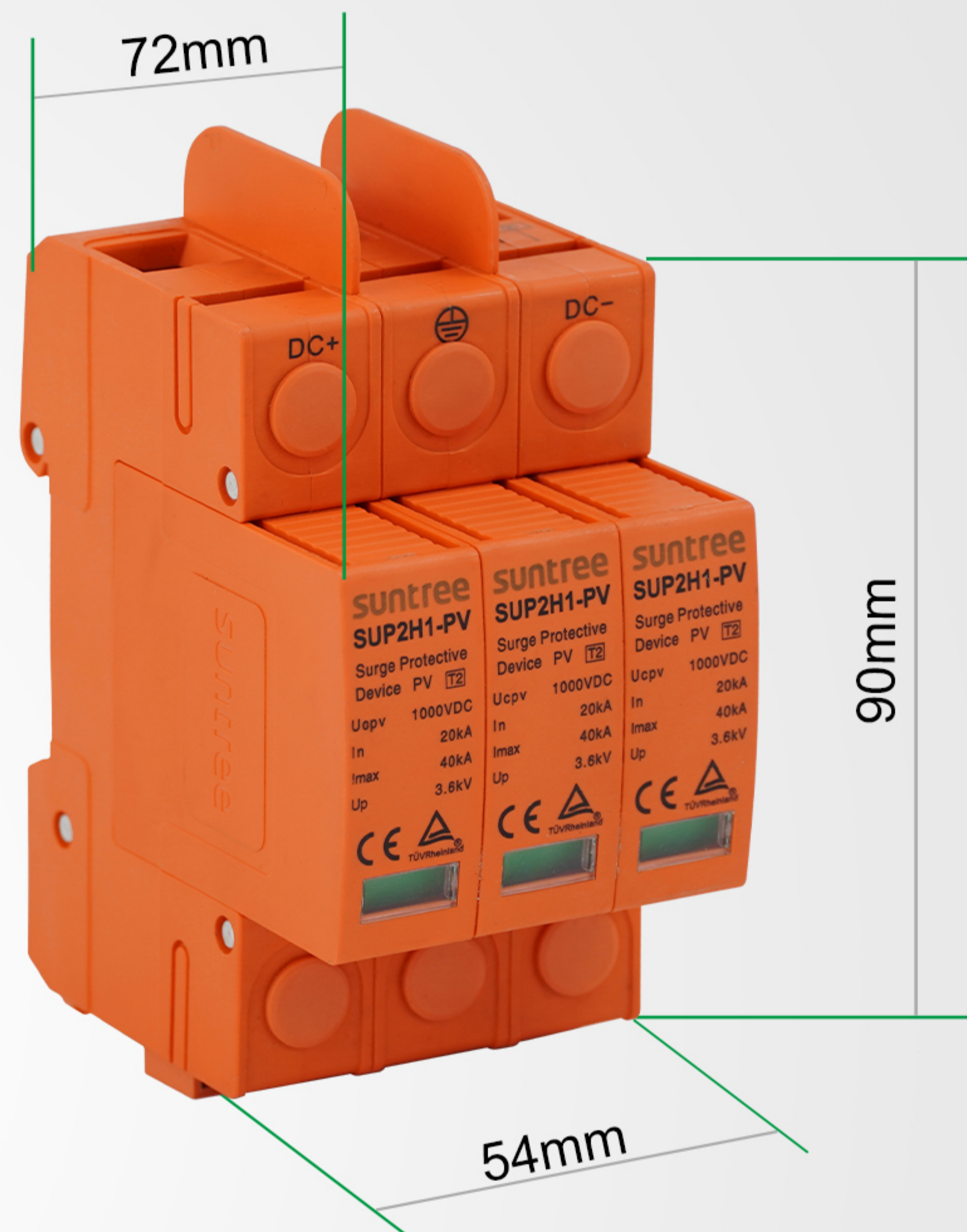
SPD is used to protect all kinds of electrical equipment in the power system from lightning over-voltage, operation over-voltage, power frequency transient over-voltage impact damage to an electrical appliance

The electrical circuit or communication lines because of outside interference peak current or voltage suddenly, the surge protector can in a very short time conducting shunt, so as to avoid damage to other equipment surge in the loop





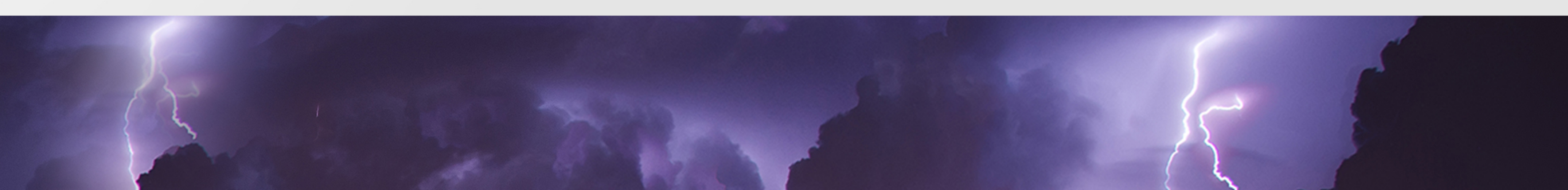
SUP2H-PV
2P 500V



SUP2H1-PV
3P 1000V

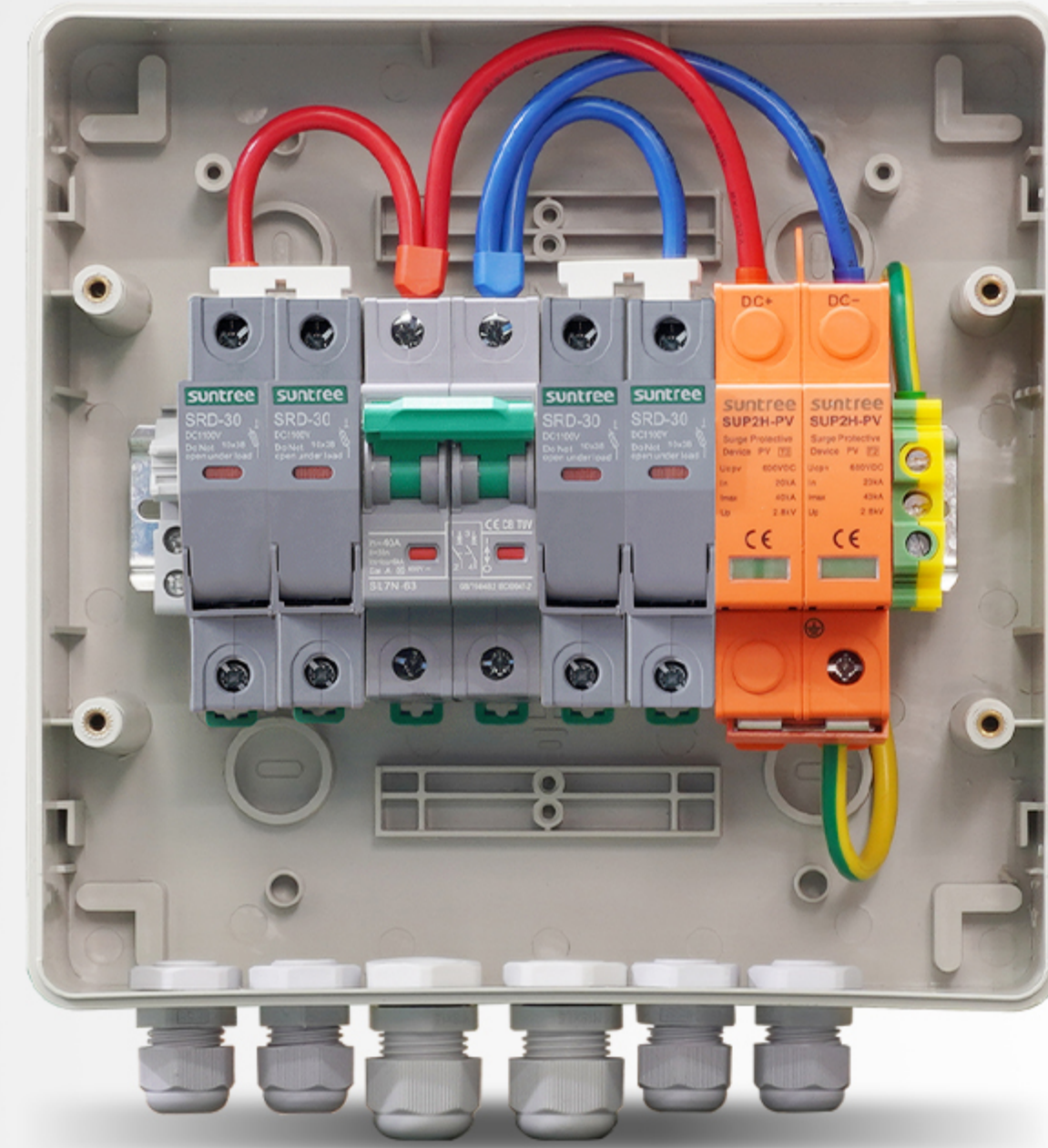


SUP2-PV
3P 1500V

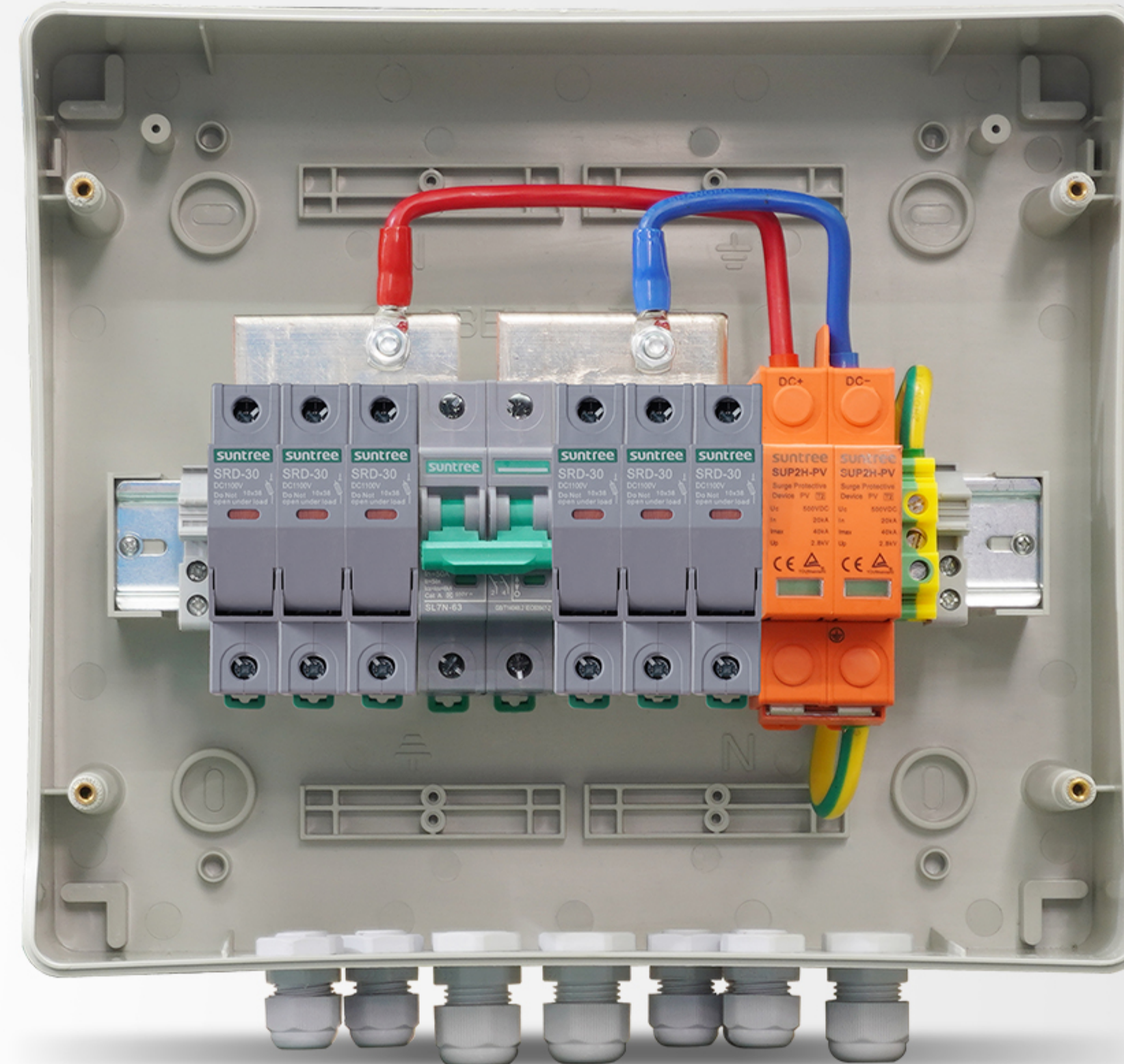


Installed front of inverter input and back of inverter output
Installed in Parallel

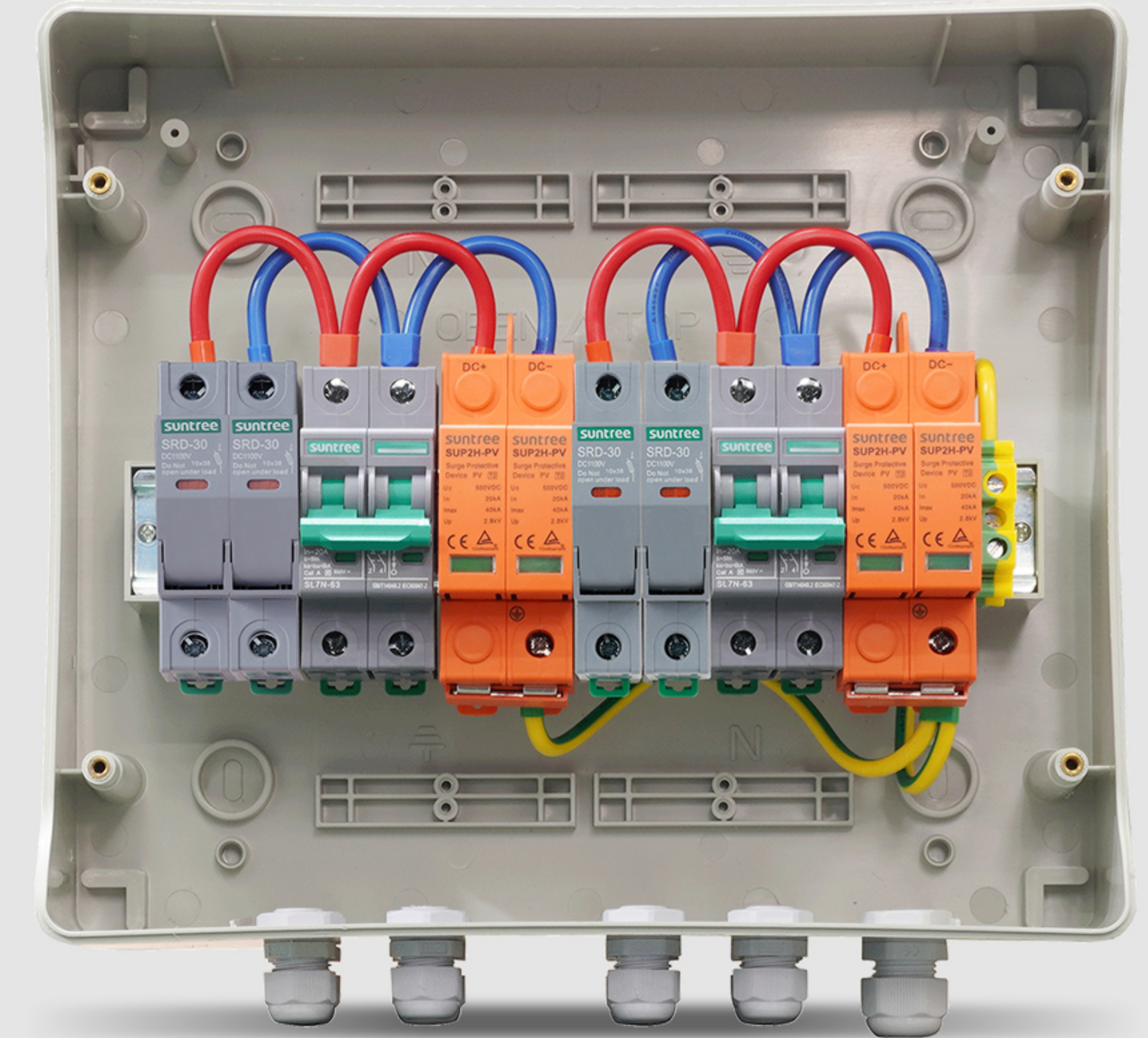




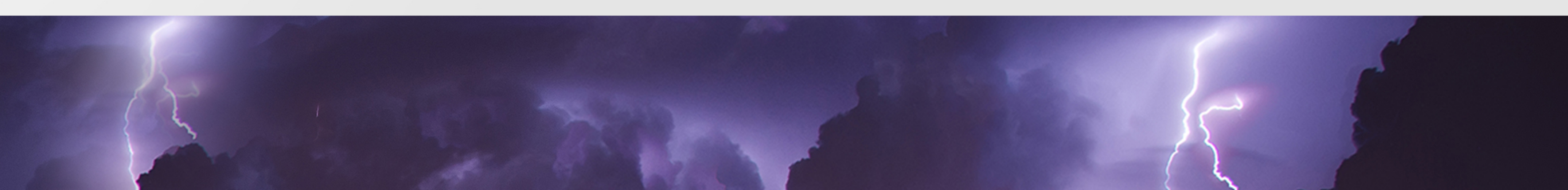
DC COMBINER BOX
TWO IN AND ONE OUT
4*DC FUSE+1*DC MCB+1*DC SPD



DC COMBINER BOX
THREE IN AND ONE OUT
6*DC FUSE+1*DC MCB+1*DC SPD



DC COMBINER BOX
TWO IN TWO OUT
4*DC FUSE+2*DC MCB+2*DC SPD



suntree
human technology nature

// www.chinasuntree.com

